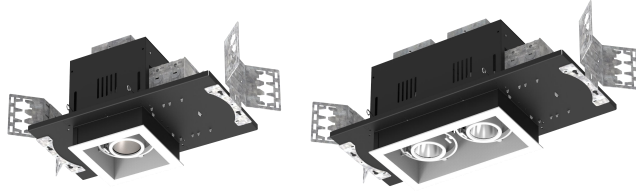
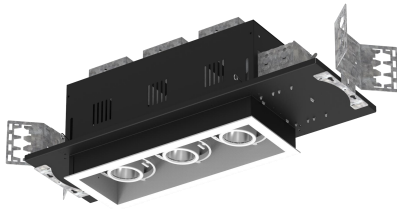


RAYO Industries

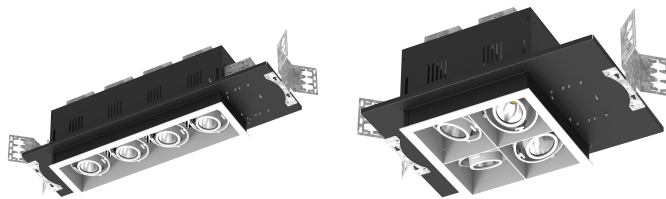


RRC4011-B

RRC4012-B



RRC4013-B



RRC4014-B

RRC4014-B-S

SPECIFICATIONS

FINISH	BLACK/WHITE
MOUNTING	RECESSED
CRI	80/90+
CCT	2700/3000/4000/5000 K
OPTICS	12/24/36°
SUITABLE LOCATION	DAMP
WARRANTY	5 YEARS
DIMMABLE	YES
MAXIMUM WATTAGE	20W/LAMP
VOLTAGES	120V/277V
LUMEN EFFICIENCY	100LM/W



Project

Project Name	
Fixture Location	
Date	

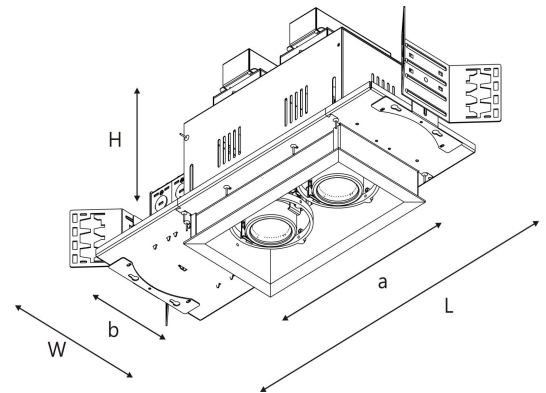
DESCRIPTION

- Commercial LED COB multiple downlight.

FEATURES

- All parts and components accessible from below the ceiling.
- Extruded trim frame includes torsion springs for convenient installations or removal from the housing.
- Can be accommodate a 1/2" to 1 1/4" ceiling thickness.
- The inner trim is constructed of 22 GA Steel.

DIMENSIONS



1x1 SPOTS

L: 15 7/8" x W: 8 9/16" x H: 8 11/16"
Cut-Out(axb): 6 1/4" x 6 1/4"

1x2 SPOTS

L: 21 1/8" x W: 8 9/16" x H: 8 11/16"
Cut-Out(axb): 11 1/4" x 6 1/4"

1x3 SPOTS

L: 26 1/4" x W: 8 9/16" x H: 8 11/16"
Cut-Out(axb): 16 5/8" x 6 1/4"

1x4 SPOTS

L: 31 5/16" x W: 8 9/16" x H: 8 11/16"
Cut-Out(axb): 21 3/4" x 6 1/4"

2x2 SPOTS

L: 21" x W: 13 3/4" x H: 8 11/16"
Cut-Out(axb): 11 7/16" x 11 7/16"